

Hand Gesture Recognition to Control Secondary Equipment in Cars

Anshula Mukadam¹, Dr. V.V Dixit²Student, Department of E&TC, Sinhgad College of Engineering, Savitribai Phule Pune University, Pune, India.¹Professor, Department of E&TC, Sinhgad College of Engineering, Savitribai Phule Pune University, Pune, India.²

ABSTRACT: While driving, controlling distinctive contraptions takes drivers' thought from the road and it has changed into the illumination behind troubles in 1 out of 3 cases. A significant measure of examination tries are being used to organize, make and test Human-Machine Interfaces which can allow a customer to work accomplice contraptions in auto without requiring driver's thought. Improvement control is proposed in the created fill in as a system which ought to be assessed as it can enormously fix up different connections between the auto and the driver and/or grouped voyagers. Key traits of such HVI contraptions join steady quality, power, and soundness of the entire structure, stretching out from the securing of the sign to its affirmation and taking after dynamically. As of late, the improvement control structure has changed into another developmental case for some human-based equipment things. This reasoning let people can control these things more genuinely, actually and emphatically. In this paper, a convenient advancement declaration approach is proposed to be an interface for the human-machine made effort (HMI) of structures. This paper exhibits some low-multifaceted nature figurings and signs to decrease the improvement verification hinder and be more sensible for controlling propelling PC systems. In addition, this paper in like manner executes a HMI interface for a telematics affiliation structure to substantial the execution of the proposed plot and to certify the proposed is fitting to be used to develop a HMI of telematics affiliation systems for the in vehicle environment. The test outcomes exhibit that the proposed game-plan can work astoundingly in a relentless affiliation system.

KEYWORDS: Driver Control, Hand Gesture Recognition, Human Machine Interface, HVI Devices

I. INTRODUCTION

In late decades, in perspective of PC programming and equipment advances of persistent change and achievement, the social life and data improvement have an agreeable relationship in the twenty-first century? Later on, particularly the interfaces of buyer hardware things (e.g. moved cells, diversions and infotalinment structures) will have dynamically works and be confounding. Rules to build up a steady human-machine interface (Human-Machine Interaction/Interface, HMI) for every buyer hardware thing has changed into an essential issue. The standard electronic information gadgets, for occasion, mouse, console, and joystick are still the most comprehended correspondence way. Notwithstanding, it doesn't derive that these contraptions are the most great and typical data gadgets for all things considered clients. Since out of date times, signs are an essential way for correspondence and collaboration between people. People can without a lot of a stretch express the idea by signs before the production of vernacular. Nowadays, movements still are ordinarily used by various people and especially are the most major and nature correspondence course for in need of a hearing aide people [1]. Starting late, the sign control system has transformed into another developmental example for some human-based equipment things, for instance, PCs, TVs, and beguilements. This strategy let people can control these things more typically, normally and profitably. This framework in like manner can be a well substitutive human-machine correspondence way for some exceptional people, for instance, in need of a hearing aide, harebrained physically impeded people, drivers, pros, even diversion players. Various examines demonstrate that the movement control will transform into the new example of HMI. Human-centered headway and framework are the genuine thought for design adroit life space and are furthermore the middle thought of various specific investigates and progressions. In step by step life, other than home life and working environment, vehicle driving is a regular development for some individuals every day. The best technique to upgrade driving prosperity and to totally value the pushed vehicle electronic things accepts the essential part to give human-centered customer interfaces. Most vehicles have been set

some up media player devices, for instance, radio, CD and DVD players and diverse contraptions. Moreover, all the more additional information structures are presented in vehicles, for instance, satellite course, electronic maps, and compact correspondences systems. Thus, more devices and systems are control by drivers despite in the midst of the driving time. In any case, drivers anticipated that would keep their cerebrum on driving, especially when the speed of vehicles are speedier. An examination of Virginia Technology Transportation Institute [2] shows that around 80% car crashes are realized by the driver preoccupation; for instance, the drivers need to work the mobile phone, GPS, or sight and sound player. With a particular final objective to work these in-vehicle contraptions, drivers need to smolder through 0.6 to 1.6 seconds. From this time forward, car accidents are happened more successfully when more contraption operations are performed by drivers. Of late, how to make reasonable in-vehicle human-machine interfaces is a paramount issue for some acclaimed auto makers or examination affiliations [4]. One of the crucial explanations behind car collision is driver preoccupation. The discretionary devices like cell phones, GPS, radio, and, starting late, the usage of tablets to view site pages, watch recordings or look at maps are extending orderly, making driver preoccupation. In light of extension in helper contraptions in auto, there should be a more secure customer interfaces which will help drivers to center all over the place. Along these lines, signal affirmation advancement is major which will individuals to talk with the machine (HMI) and work together typically with no mechanical devices. A movement is a kind of non-verbal correspondence in which evident genuine exercises bestow particular messages, either set up of talk or in parallel with words. Movements fuse advancement of the hands, face, or diverse parts of the body.

II. RELATED WORK

Poonam Sonwalkar, Tanuja Sakhare, Ashwini Patil, Sonal Kale, "Hand Gesture Recognition for Real Time Human Machine Interaction System", International Journal of Engineering Trends and Technology (IJETT) – Volume 19 Number 5 – Jan 2015. Proposed system shows the Real Time Human-machine Interaction structure using hand signal Recognition to handle the mouse event , media player , picture viewer. Jinhua Zeng, Yaoru Sun, and Fang Wang, "A trademark hand movement structure for brilliant human-PC affiliation and therapeutic help", 2012 Third Global Congress on Intelligent Systems. It was made for the clever wheelchair control. The hand signal vocabulary includes five key hand positions and three compound states, and has the advantages of the unimportant hand developments, customer's redirection distinguishing proof and human-based strategy.

Francisco Parada-Loira, Elisardo González-Agulla, José L. Alba-Castro , "Hand Gestures to Control Infotainment Equipment in Cars, 2014 IEEE Intelligent Vehicles Symposium (IV) June 8-11, 2014. Dearborn, Michigan, USA. In proposed structure an observable infrared camera mounted on the top of the auto and showing the development stick zone, and is arranged in a mix of some new and some without a doubt comprehended PC vision estimations. Most flag affirmation methodologies generally contain three essential stages [5].The first stage are the thing revelation. The goal of this stage is to perceive hand objects in the propelled pictures or recordings. Various environment and picture issues are relied upon to disentangle at this phase to ensure that the hand shapes or areas can be expelled precisely to update the affirmation precision.

Yilmaz and Shah [8] proposed a human skeleton based procedure called action representation to delineate, track and separate the action of hands, then uses a couple of parts, for instance, partition and oval back and forth movement to see movements. El-Sawah et al. [9] further used a 3D skeleton to track and see movements. In any case, this technique simply can recognize the hand with gloves. Lu et al. [10] used Histograms of Oriented Gradient (HOG) to delineate the segment of a hand, and after that the Hidden Markov Model is used to see signs and exercises of hands. Luo et al. [17] further used a learning estimation called Adaboost to recognize movements by HOG.

James et al. [11] used the Principle Component Analysis (PCA) to particular the components of hands with the lower estimation. Gorelick et al. [12] used space-time shapes to depict the relationship of the time and the type of hand then used nearest neighbor count (k-NN) to assemble and see signs and exercises. Calderara et al. [13] proposed a procedure called movement imprints to consider the perspectives in different edges with time then to assemble a 2D highlight space for action taking after and examination. Reinforce Vector Machine (SVM) is an unmistakable game plan methodology moreover can be used to see flags or hand exercises. Schuldt et al. [14] used SVM to organize adjacent development portrayal of hands.

Scovanner et al. [15] used a Scale Invariance Feature Transformation (SIFT) technique to depict hands. This technique first distinguishes each corner point and after that explores the components removed from the neighboring pixels of

these corner centers. These components when in doubt portray the movements of splendor oblivious scale space and are used to see by SVM. Liu et al. [16] moreover used SVM to arrange the segment called Video-Word for movement affirmation. In order to ensure all hands can be recognized, various examines accept that the customers have been wearing specific gloves or other equipment's. In this paper, development based component signal affirmation structure for in vehicle System control is proposed. To let the proposed arrangement can realize well in rational in-vehicle circumstances. Thusly, the proposed arrangement can't accept that the customers need to besides item specific equipment's.

III. PLAN OF IMPLEMENTATION

A. Block Diagram

In proposed we are preparing the picture from the given stream in fig 1. Utilizing skin shading division utilizing YCbCR shading space to characterize the gathered pictures. We can adequately isolate the Y, R, G and B and can be effectively interpreted into Y,Cb and Cr. Once the Hand zone is recognized we execute morphological strategy for picture sifting and edge recognition. At last we get the directions of the fingertips.

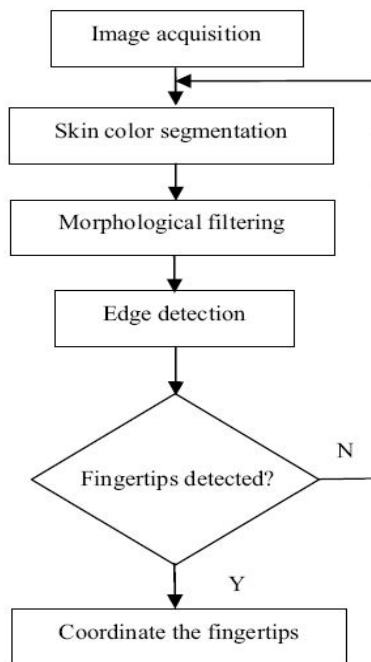


Figure 1. Proposed system

B. Modelling

Hand distinguishing proof: Hand disclosure is basic for a sign interface as it limits as a change to turn on the interface. Hand acknowledgment methodologies are tricky to tangled establishment. Hand acknowledgment uses intensified AdaBoost procedure. Hand taking after: Texture or appearance based strategies have been upgraded to be all the more intense for the non-unyielding articles. In this methodology, we use a multi-measured strategy which joins optical stream and shading sign to gets steady hand taking after. Gathering of components method viable in the verbalized article taking after. Hand division: A single Gaussian model can be used to portray hand shading in HSV shading space. Histogram procedure relies on upon the assumption that no other revealed skin shading some bit of customer in the particular locale around the hand. Wooden inquiries experiencing the reach, the histogram will stray and division results will be immediately spoiled. In light of present circumstances our strategy can hint at change results. Movement affirmation: Hand movements using neighborhood oriental histogram highlight spread model, however establishment in tests are totally essential and sleeve shading and surface are restricted. Scale-space highlights recognizable proof have

International Journal of Innovative Research in Science, Engineering and Technology

(An ISO 3297: 2007 Certified Organization)

Vol. 5, Issue 6, June 2016

been by and large associated in article affirmation, picture enrolling. For planar hand shape, the scale-space highlight disclosure can be used to distinguish blob and edge structures, i.e. palm and finger structures. In this strategy multi-scale highlight area with hand taking after and division is used.

IV. PROPOSED SCHEME

Keeping in mind the end goal to ensure to pick up a well execution of the proposed plan for in-vehicle PCs, this paper assumes some environment conditions: (a) the proposed plan is utilized to develop a motion acknowledgment framework for an indoor or in-vehicle environment; (b) the camera catches hand video from a looking down perspective; (c) the foundation in every hand picture is not extremely intricate and is darker than hands. Taking into account these predefined environment conditions, the processing multifaceted nature and acknowledgment exactness of this signal acknowledgment plan can be viably enhanced, and this plan can be utilized to develop a more smooth human based client interface (UI) for the frameworks of vehicles or other buyer electronic items. The proposed plan can be utilized to build up a constant signal acknowledgment framework. Consequently, this plan ceaselessly perceives signals in the spilling video from a camera gadget. In any case, by and by, the motion acknowledgment plot still is a static picture preparing and acknowledgment plan. Henceforth, video casings are should have been removed into successive static pictures in the handling of the proposed plan. The hand locale recognition is a critical method for recognizing the shape and zone of every hand. The general picture division procedures can be ordered into two noteworthy classes, edge-based division and locale based division strategies. In this paper, the proposed plan is utilizes area based techniques to extricate the hand locale from the foundation by two discretionary strategies. The primary alternative is to take out most foundation locales to remain the hand district when the foundation of executed environment is less mind boggling. The second choice is to identify hand areas by shading or splendor. Be that as it may, the shading and splendor of hands for the most part are sporadic for various individuals, environment and signals. So as to take care of this issue, the proposed conspire initially binarized each caught video outline by Otsu's dynamic thresholding Method [18]. At that point the proposed plan can undoubtedly separate the biggest frontal area article to be the hand locale in view of nature condition assume in this paper. Keeping in mind the end goal to quantify the range of every frontal area question, the associated part naming technique [19] can be utilized to stamp each detached article with various mark. As a rule, the luminance of in-vehicle Environment as a rule is lacking. In this way, numerous commotions might be effortlessly showed up in the video. With a specific end goal to lessen these clamors, some basic commotion channel techniques, e.g. Gaussian channel and middle channel strategies can be utilized to smooth video outlines before the picture binarization. To diminish the impacts of the light changing in various situations, the advantageous histogram leveling technique [20] is utilized to perform enlightenment standardization. Other than hands, most different protests ordinarily are perpetual between every video outline when the camera gadget is settled. In this way, foundation reference pictures can be acquired in certain time interims to evacuate most non-hand objects by considering these articles as the foundation, and the proposed plan can acquire execution in the associated segment naming method. In this paper, the signals are communicated by the postures of fingers and palms. Be that as it may, the distinguished hand protests more often than not contain wrists and arms. Keeping in mind the end goal to concentrate on this district in further motion acknowledgment method, the proposed plan ought to expel the wrist and arm areas from each distinguished item. In the first place, locate the even position of the most stretched out part (p_1 in Figure 2). At that point, the lower area of even position is examined segment by section in a descending bearing to distinguish the wrist position by the width which the width is littler than close and higher pixel segment (p_2 in Figure 2), then the beneath district is viewed as a the wrist and arm areas and is expelled to guarantee the remaining locale just contains fingers and palm. Keeping in mind the end goal to abstain from distinguishing the arm area, an edge Ts is utilized to characterize a condition that the width ought to be littler than higher pixel segment w_i -Ts, where w_i is the width of the hand object in the even position p_1 .

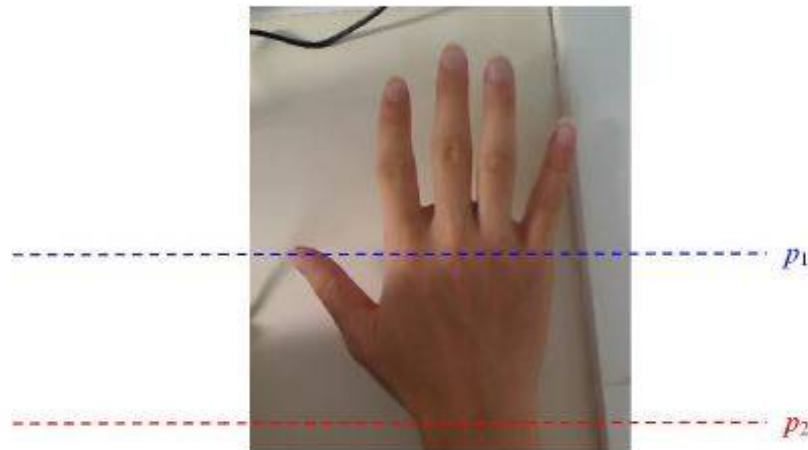


Figure 2. The horizontal positions with largest and smallest width in a hand region

The objective of this paper is to control in-vehicle gadgets by signals. Subsequently, the motions all ought to be easy to maintain a strategic distance from the drivers to be diverted when then control these gadgets by signals. In this paper, the signals can be arranged into the static motions and element motions. The static signals contain Close, Open, and Fist motions, and the dynamic motions are interpreted by progressions of the static motions. The static signals are appeared as Figure 3. To perceive these signals, the proposed plan removes some components to distinguish the shape contrasts between every motion. The proposed conspire first discovers five focuses on the tip of every finger PT_m and four most reduced focuses between all close fingers PL_n , and after that the normal separation AD_i between each PT_m and PL_n can be the main component to distinguish the distinctions of Open motion between other two motions. Be that as it may, these focuses are elusive by checking the tallness of every point with neighboring focuses on the hand form. The reason is like this lone finds the nearby ideal arrangements such that an excessive number of focuses be found and are too difficult to decide the real worldwide ideal arrangements, particularly when the form is not smooth. Keeping in mind the end goal to locate the worldwide ideal arrangements, this paper utilizes Convex Hull calculation [21] to locate a littlest curved which can contain the entire hand area (see Figure 3). The tips of fingers can be effectively found in the crossing point of the curved and the shape of the hand, and after that each least point PL_n can be the form point which has the biggest separation from the raised between every tip point. The PT_m and PL_n location aftereffects of a case are appeared in Figure 3. These element focuses can be utilized to adequately perceive the Open motion, however they can't work extremely well to identify the distinction of Close and Fist signals. It is on the grounds that the normal separation of PT_m and PL_n are comparable in Close and Fist signals. Keeping in mind the end goal to assist recognize them, another component is required. The significant component for distinguishing the Close and Fist is the angle proportion AR_j of every hand area in certain course extend. Keeping in mind the end goal to locate the most discernable proportion, a littlest curved shape can be initially recognized for every hand area, and after that the major and minor tomahawks of the relating circle can be utilized to get the perspective proportion AR_j to be the element for distinguishing Close and Fist signals. Keeping in mind the end goal to acquire execution, the dynamic signals are shaped by serial static motions. For instance, clients can keep Close motion and move their hands in the counterclockwise or clockwise heading to choose the following/past thing of a menu. In this paper, the proposed plan can constant perceive signals in every video outline from a camcorder, and after that looks at the static motion and hand position changing in neighboring edges to advance perceive dynamic motions. An altered reference purpose of every hand district is expected to distinguish the hand position evolving. This point can be the most elevated point or the focal point of the hand area.

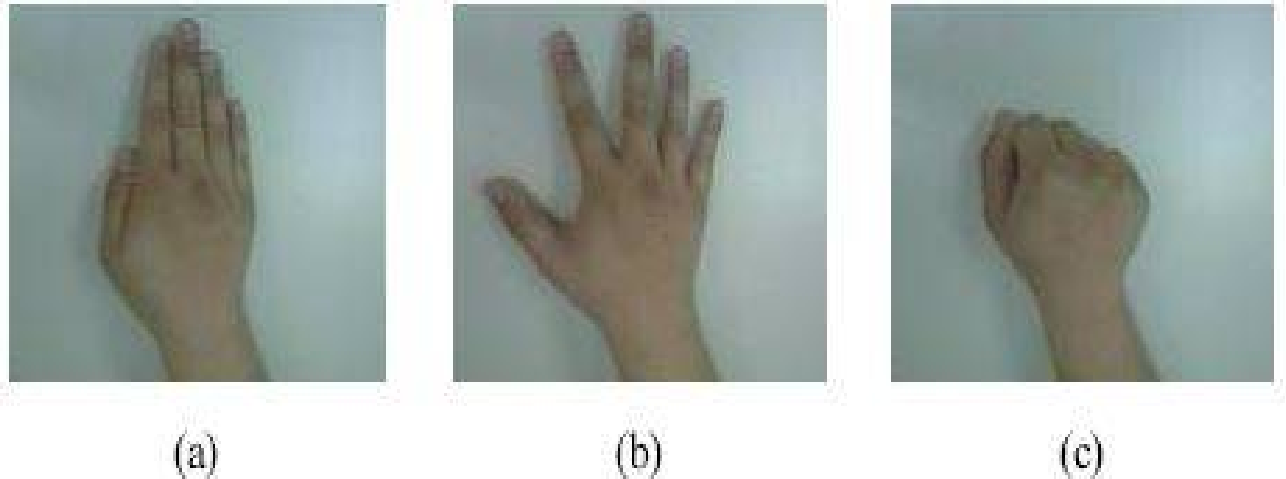


Figure 3. The static gestures in the proposed scheme: (a) Close; (a) Open; (a) Fist.

We calculate the distance from the center =

$$D_i \text{ and the average distance as } \bar{D} :$$

$$D_i = \sqrt{(j_i - x_0)^2 + (k_i - y_0)^2} \quad (1)$$

$$\bar{D} = \sum_{i=1}^n D_i / n \quad (2)$$

We choose a point in the middle of the continuous coordinates.

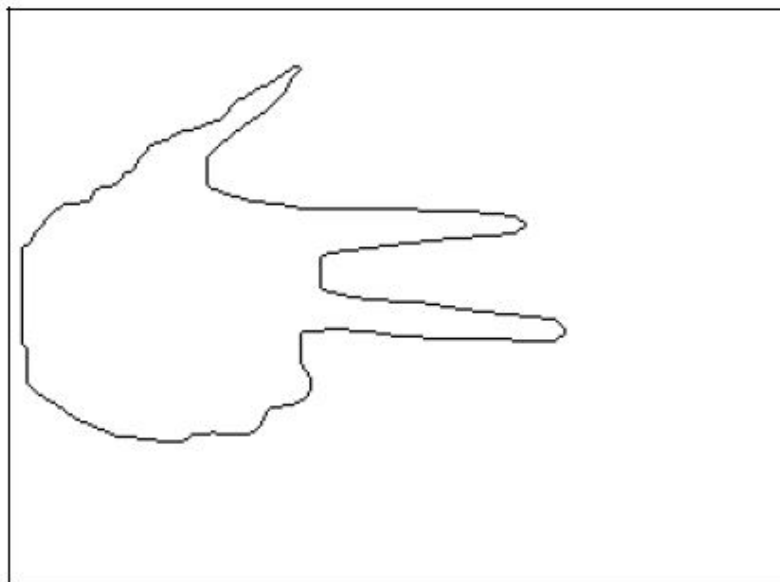


Figure 4. Gesture Outline

V. DESCRIPTION OF THE FINGER MODEL

The most remarkable parts of a hand are the fingers. Fingers are barrel shaped articles with almost steady measurement from root to fingertip. The proposed finger model is appeared in Fig.1(A). Here, the limit of the fifth finger, Cfi, is considered as the synthesis of circular segment edges (Cti, fingertip or joint) and a couple of parallel edges

$$(C_{ei} + C_{0ei}, \text{finger body}): C_{fi} = (C_{ei} + C_{0ei}) + X C_{ti} \quad (1)$$

The finger focus line (FCL) CFCLi is presented, which can be viewed as the inside line of the finger parallel edges. Fingertip/joint O_{ti} situates toward the end purpose of FCL, and it is the focal point of the circular segment bend C_{ti} too. The separation between the paralleled finger edges are known as $2*d$, where d is the sweep of all fingers.

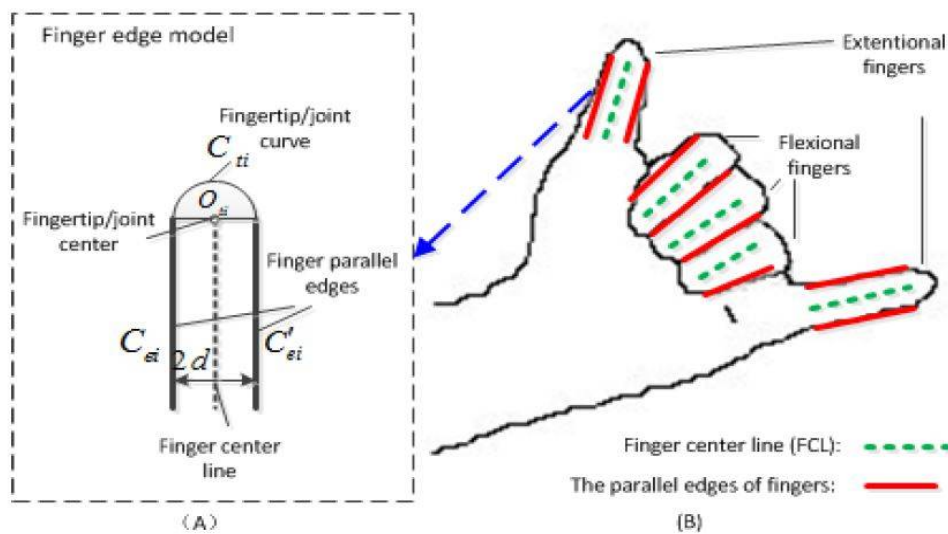


Figure. 5. Finger edge model (A) and the parallel edges (B)

VI. EXPERIMENTAL RESULTS

In this section, some experimental are performed to show the performance of the proposed scheme. Besides, an implemented HMI system also is presented in this section to show an application example of gesture control. In this experiment, we are used Nine different gesture are defined as below-

Defined Gestures

d	0001	0012	0023
Gesture	1	2	3
d	0034	0135	1002
Gesture	4	5	6
d	0102	0113	0124
Gesture	7	8	9

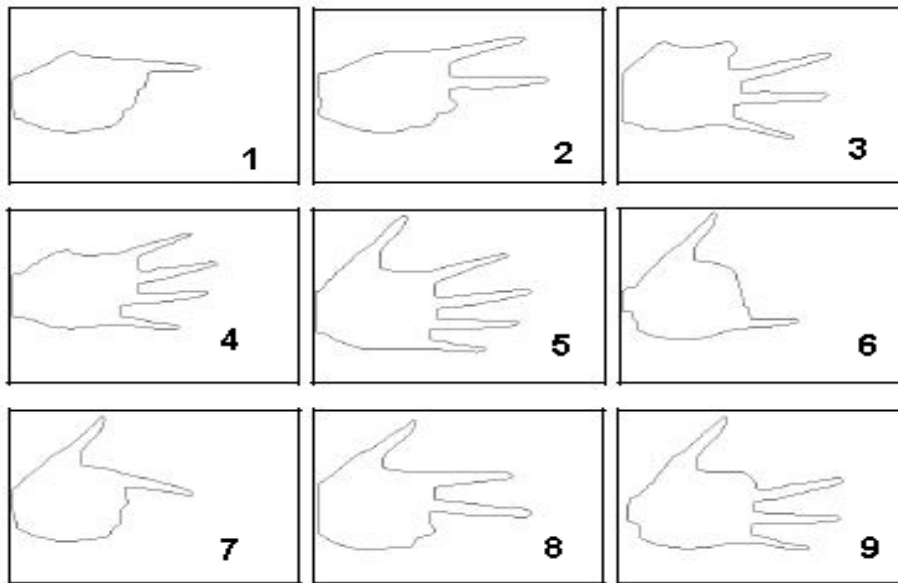
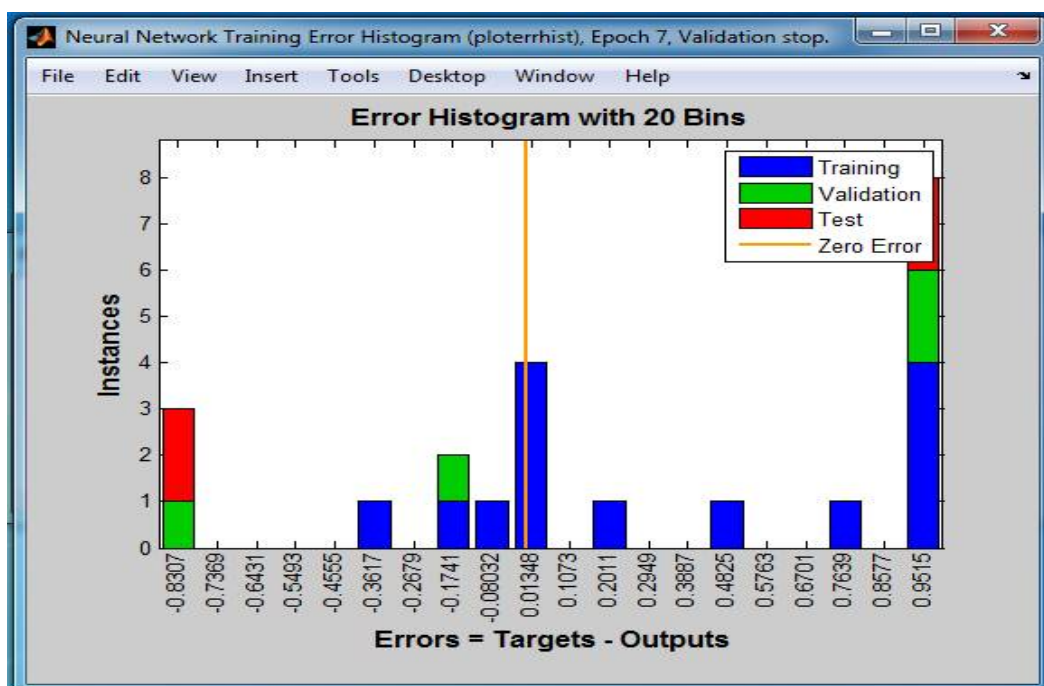


Figure. 6. Defined Gesture

In the experiment we use the MatLab Environment The database contain 100 images and gesture of 10 people. Each person performs 5 different direction and size motions. From the below histogram we conclude that the proposed system is very accurate for all 1- to 9 gesture.



International Journal of Innovative Research in Science, Engineering and Technology

(An ISO 3297: 2007 Certified Organization)

Vol. 5, Issue 6, June 2016

VII. CONCLUSION

Starting late, the sign control methodology has transformed into another developmental example for some human-based contraptions things. This strategy let people can control these things more really, actually and profitably. This paper proposes a sign affirmation arrangement with well accuracy and profitability. This arrangement can be associated with be the human-machine interface for customers to control some organization system just by their hands and can work commendably in a bona fide telematics organization structure. The proposed plan in like manner can be further associated with be HMI for various applications, for instance, sharp TVs, playing amusements, robots, notice board and so forth.

REFERENCES

- [1] Francisco Parada-Loira, Elisardo González-Agulla, José L. Alba-Castro , "Hand Gestures to Control Infotainment Equipment in Cars, 2014 IEEE Intelligent Vehicles Symposium (IV) June 8-11, 2014.
- [2] Poonam Sonwalkar, Tanuja Sakhare, Ashwini Patil, Sonal Kale, "Hand Gesture Recognition for Real Time Human Machine Interaction System", International Journal of Engineering Trends and Technology (IJETT) – Volume 19 Number 5 – Jan 2015
- [3] Jinhua Zeng, Yaoru Sun, and Fang Wang, "A characteristic hand motion framework for clever human-PC communication what's more, medicinal help", 2012
- [4] Yikai Fang, Kongqiao Wang, Jian Cheng and Hanqing Lu, 'Continuous hand signal acknowledgment strategy' for National Lab of Automation, Chinese Academy of Sciences.
- [5] Y. Cui and J. Weng, "View-based hand division and hand arrangement acknowledgment with complex foundations," in Proceedings of thirteenth ICPR. Vienna, Austria, Aug. 1996.
- [6] Mathias Kolsch, "Vision based hand motion interfaces for wearable processing and virtual situations," PHD Dissertation, UCSB, 2005.
- [7] Lars Bretzner, Ivan Laptev, Tony Lindeberg, "Hand Gesture Recognition utilizing Multi-Scale Color Features, Hierarchical Models and Particle Filtering", Computational Vision and Active Perception Laboratory (CVAP) 2 Center for User Oriented IT Design (CID) Dept of Numerical Analysis and Computing Science, KTH, 100 44.
- [8] A. Yilmaz, and M. Shah, Actions as items: a novel activity representation, in Proc. of the 2005 IEEE Computer Society Conference Computer Vision and Pattern Recognition, 2005.
- [9] A. El-Sawah, N. D. Georganas, and E. M. Petriu, A Prototype for 3-D Hand Tracking and Posture Estimation, IEEE Transactions on Instrumentation and Measurement, Vol. 57, pp. 1627–1636, 2008.
- [10] W. Lu, and J. Small, Tracking and perceiving activities at a separation, in Proc. of the ECCV Workshop on Computer Vision Analysis in Sport Environments, pp. 49–60, 2006.
- [11] W. James and J. Minimal, Simultaneous following and activity acknowledgment utilizing the PCA-HOG descriptor, in Proc. of the Third Canadian Conference on Computer and Robot Vision, pp. 6, 2006.
- [12] L. Gorelick, M. Clear, E. Shechtman, M. Irani, and R. Basri, Actions as space-time shapes, IEEE Trans. Design Analysis and Intelligence Vol. 29, No. 12, pp. 2247–2253, 2007.
- [13] S. Calderara, R. Cucchiara, and A. Prati, Action signature: A novel all encompassing representation for activity acknowledgment, in Proc. of the International on Advanced Video and Signal Based Surveillance, IEEE Computer Society Press, Washington, pp. 121– 128, 2008.
- [14] C. Schuldt, I. Laptev, and B. Caputo, Recognizing human activities: a neighborhood SVM, in Proc. of the International Conference on Pattern Recognition, Vol. 3, IEEE Computer Society Press, Cambridge, UK, pp. 32–36, 2004.
- [15] P. Scovanner, S. Ali., and M. Shah, A 3-dimensional filter descriptor and its application to activity acknowledgment, in Proc. of the fifteenth gathering on Multimedia, ACM, pp. 357–360, 2007. IEEE Computer Society Press, Anchorage, Alaska, pp. 1–8, 2008.